

Eidsfos Verk,

Eidsfos.

1800-1900

Støbegods & Landbrugsredskaber

m. m.

fra

Eidsfos Verk,

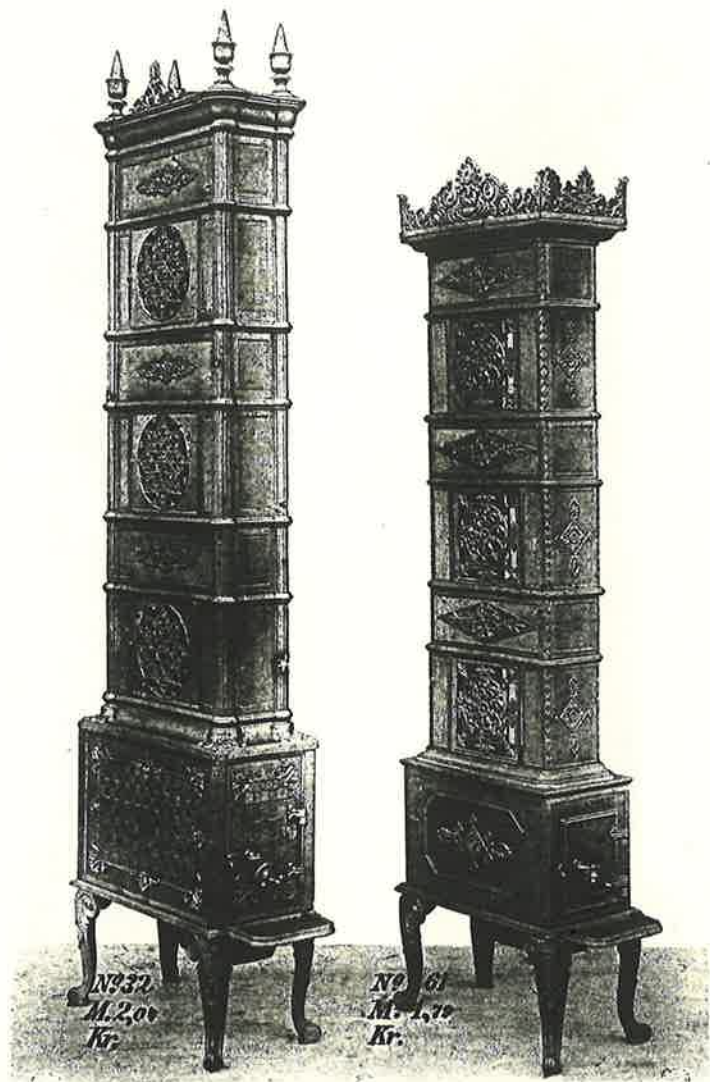
Eidsfos.

Lager og Udsalg ved:



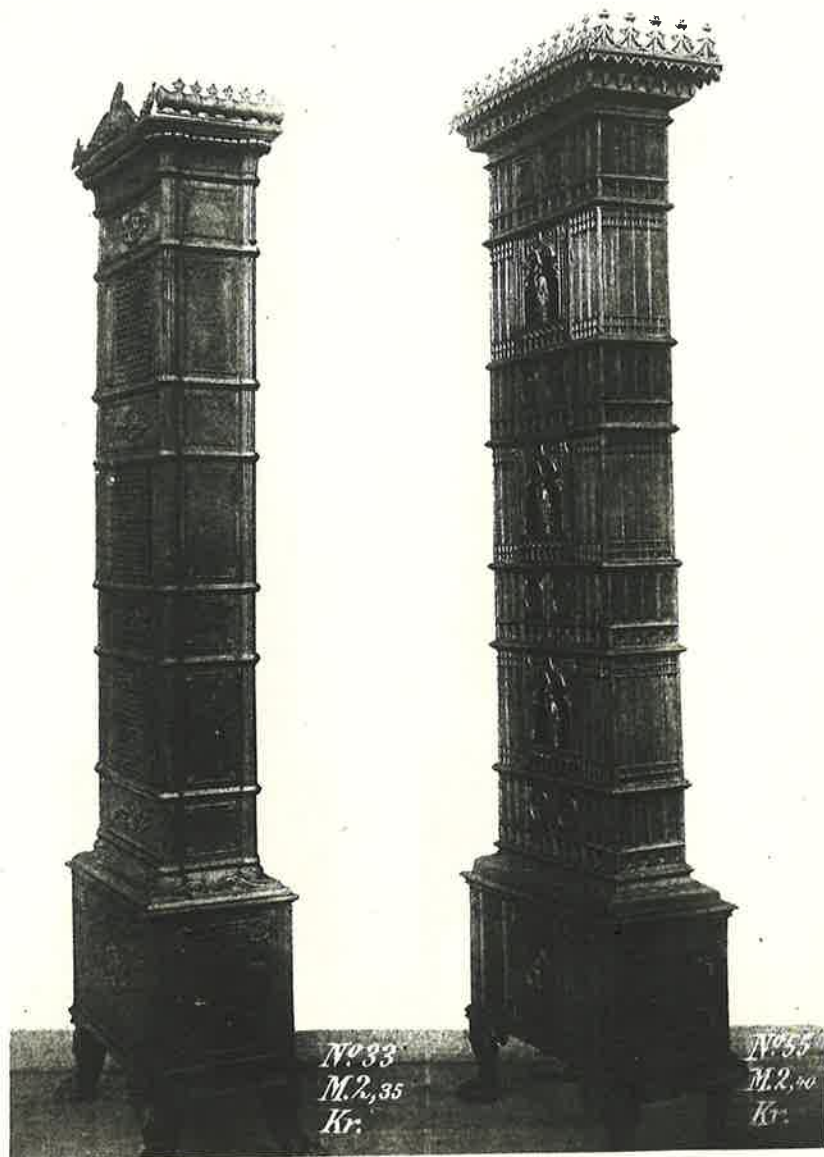
№ 30
M. 2, 12
Kr.

№ 56
M. 2, 12
Kr.



N^o 32
M. 2,00
Kr.

N^o 61
M. 1,70
Kr.

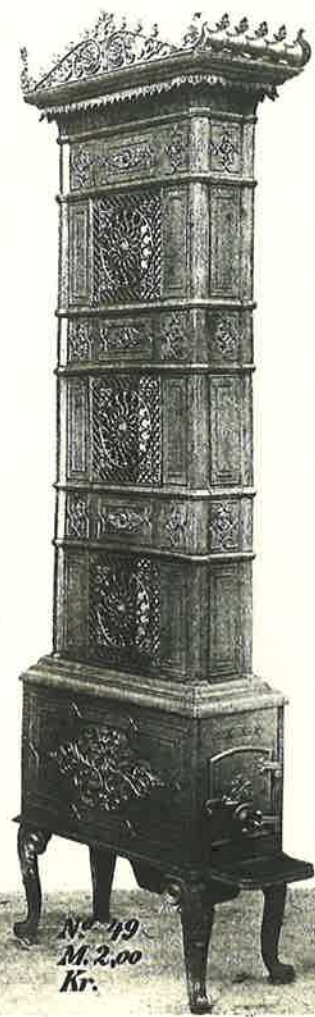


N° 33
M. 2,35
Kr.

N° 35
M. 2,70
Kr.



No 34
M. 2,12
Kr.



No 39
M. 2,00
Kr.



Nº 36
M. 1,91
Kr.



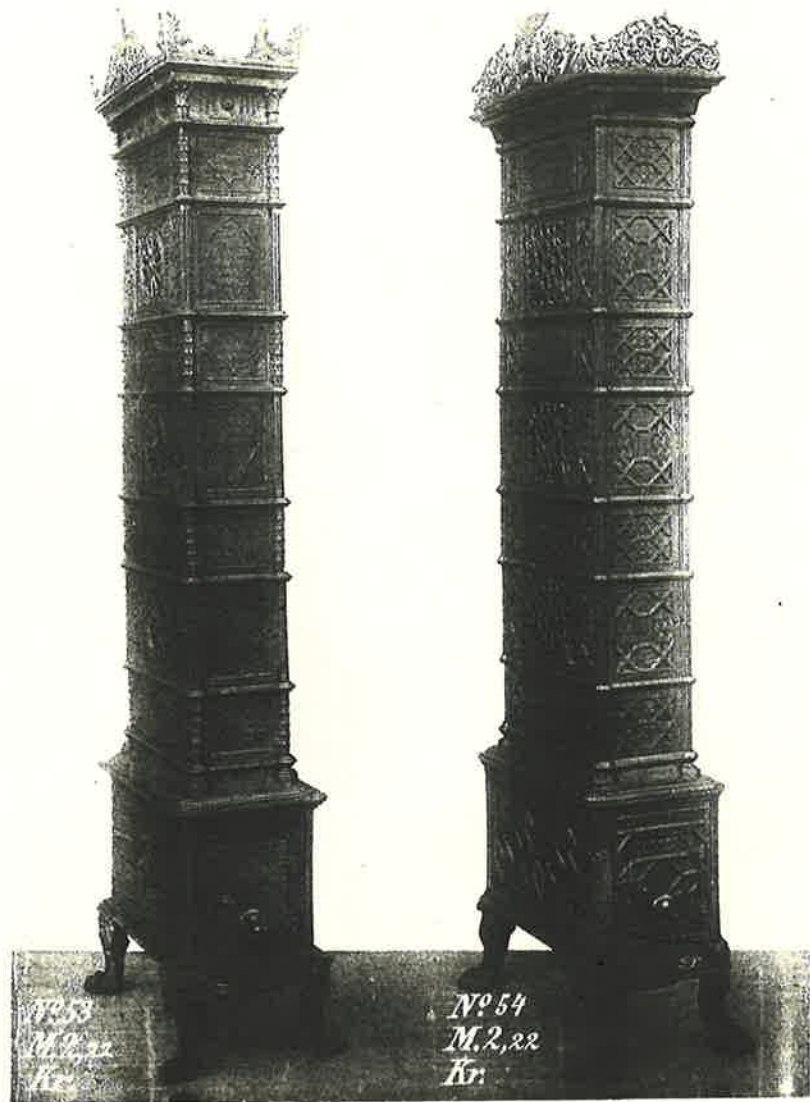
Nº 47
M. 1,76
Kr.



*N^o 43udspring
M. 2,08
Kr.*



*N^o 43
M. 2,05
Kr.*

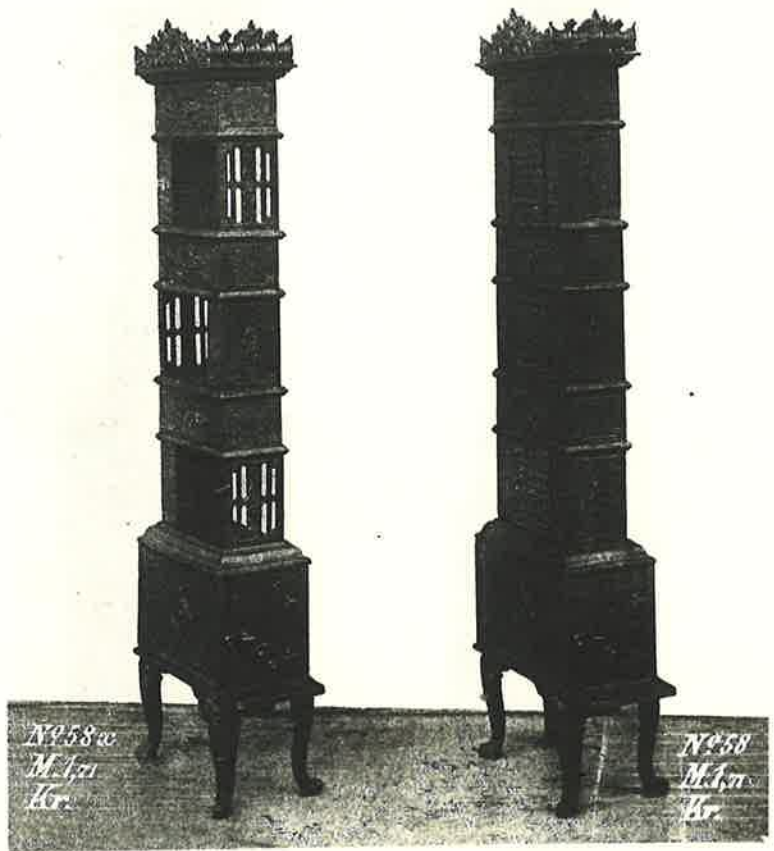


Nº 6/3
M. 1,50
Kr.



Nº 57
M. 1,56
Kr.





N^o 58 w
M. A. G.
Kr.

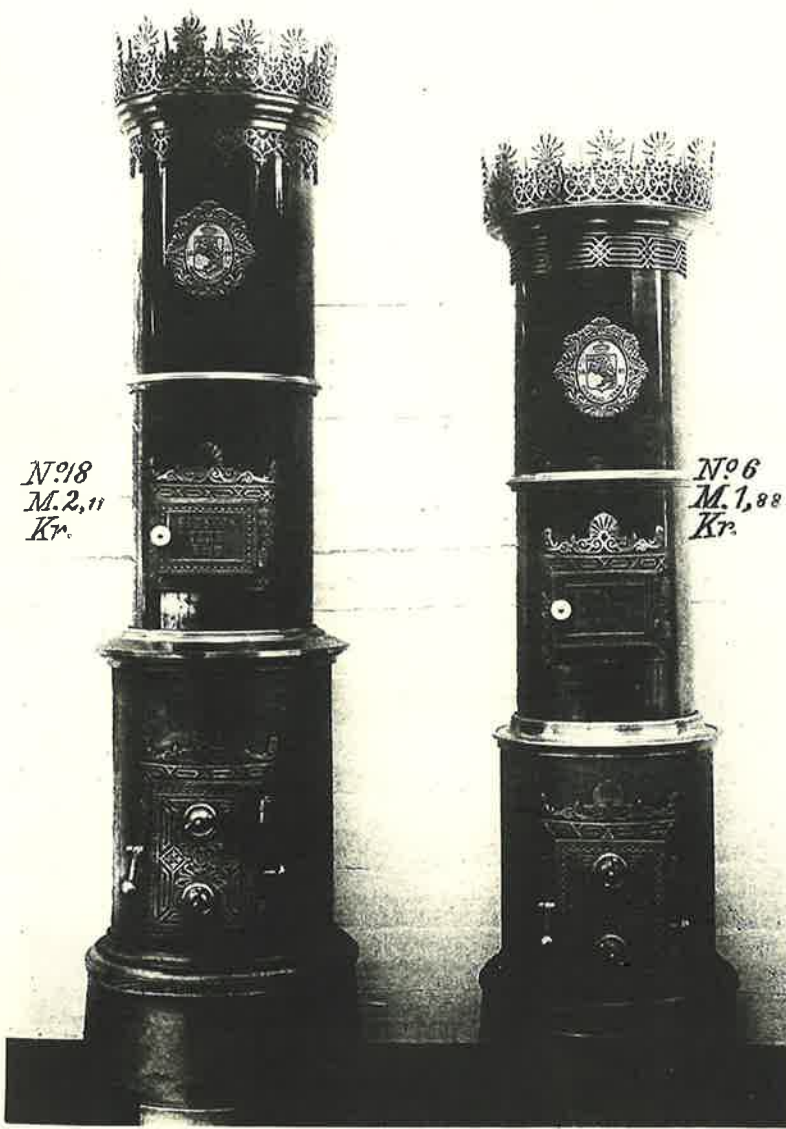
N^o 58
M. A. G.
Kr.



N^o 60
M. 1,85
Kr.

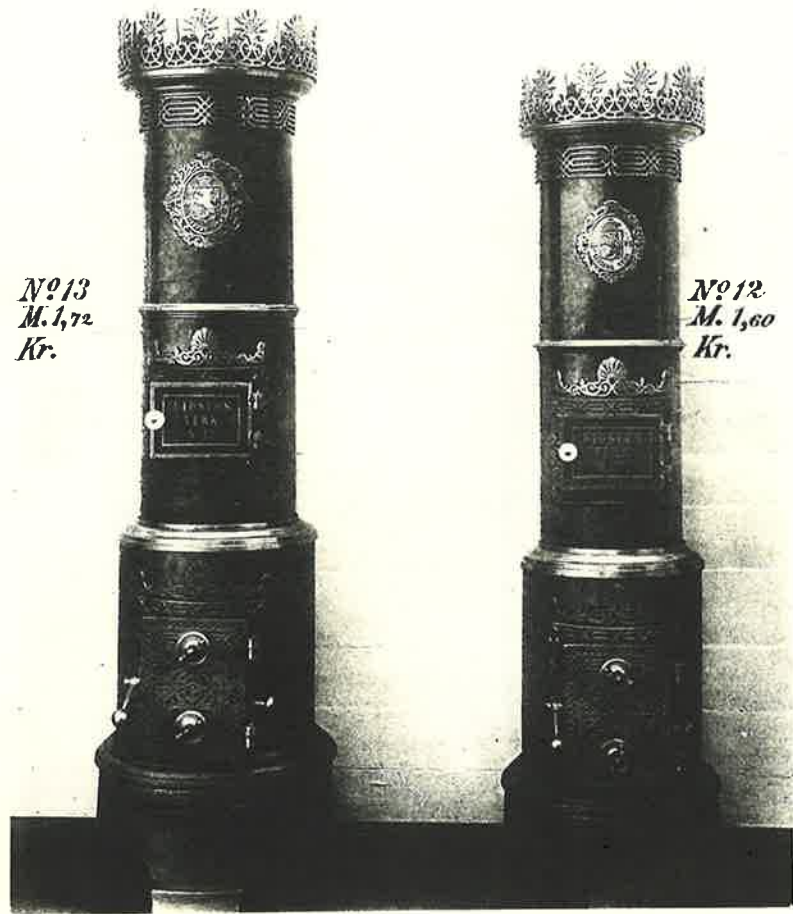


N^o 59
M. 1,93
Kr.



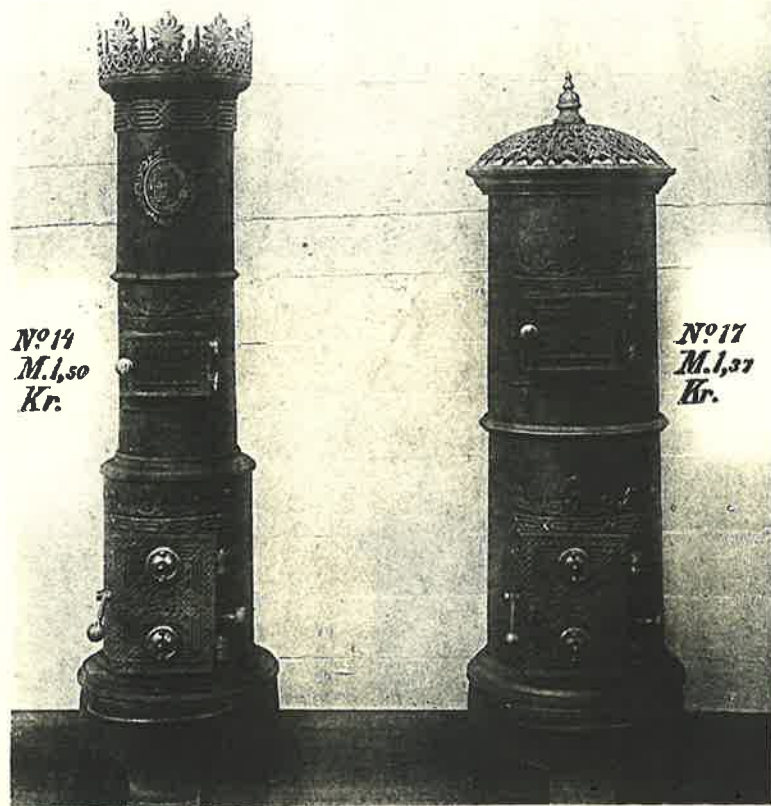
Nº 18
M. 2, 11
Kr.

Nº 6
M. 1, 88
Kr.



Nº 13
M. 1,72
Kr.

Nº 12
M. 1,60
Kr.



N^o 14
M. 1,50
Kr.

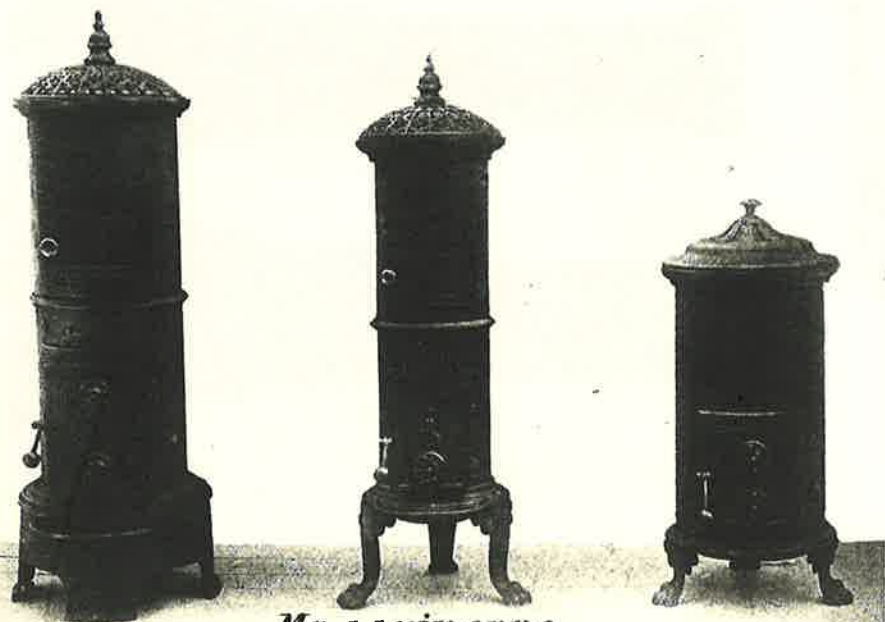
N^o 17
M. 1,37
Kr.

1893: kr. 60,-
(Prisoversikt, Eidsfos Verk,
"Circulaire", 16. 6. 1893)



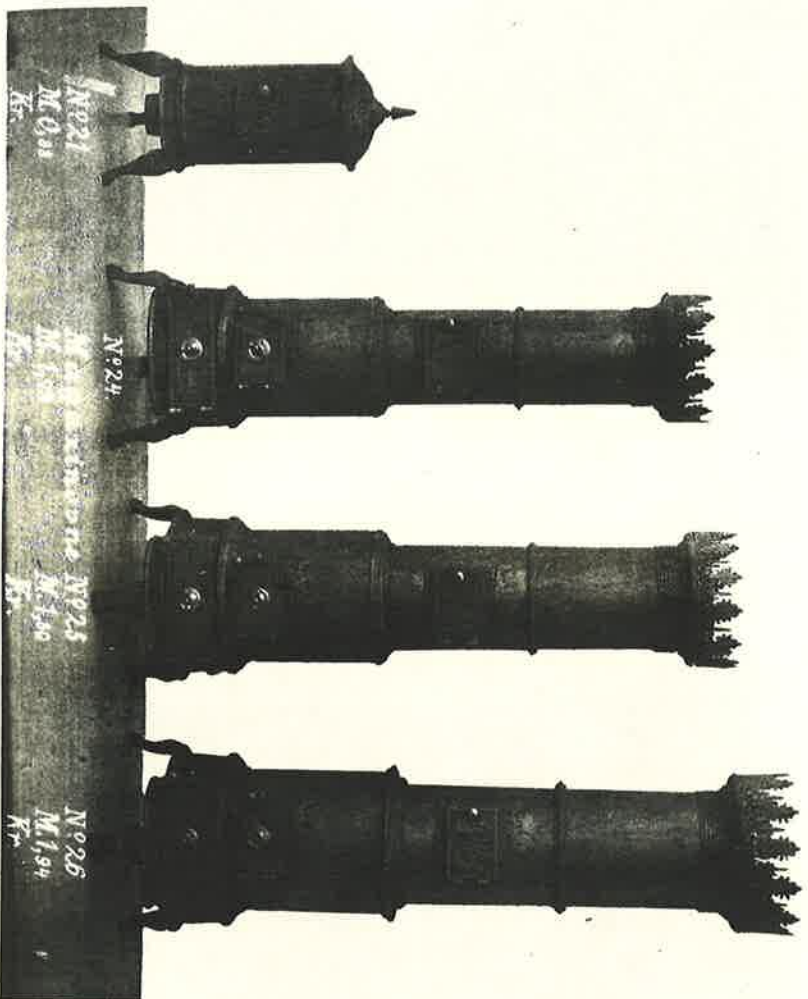
Magaxinovne

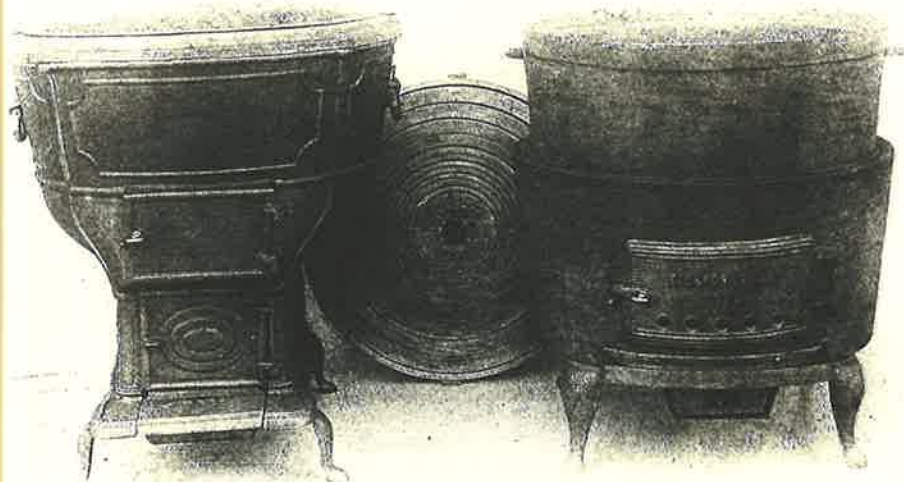
<i>Nº 19</i>	<i>Nº 9</i>	<i>Nº 20</i>
<i>M. 0,30</i>	<i>M. 0,65</i>	<i>M. 0,55</i>
<i>Kr.</i>	<i>Kr.</i>	<i>Kr.</i>



Magaxinovne

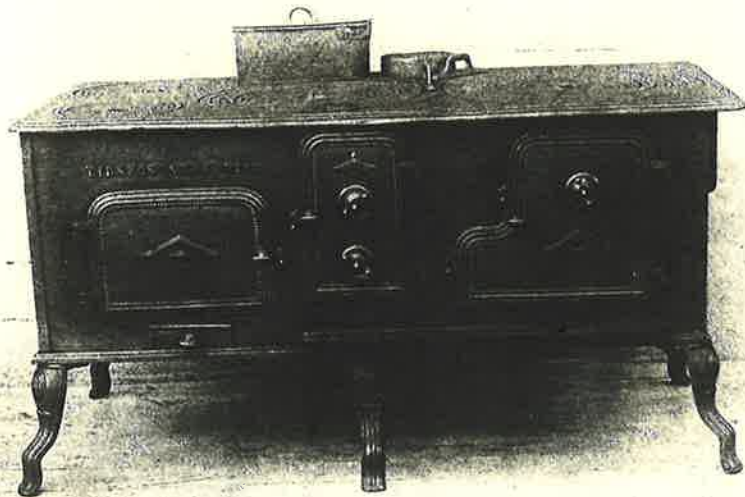
<i>Nº 15</i>	<i>Nº 16</i>	<i>Nº 11</i>
<i>M. 1,20</i>	<i>M. 1,10</i>	<i>M. 0,82</i>
<i>Kr.</i>	<i>Kr.</i>	<i>Kr.</i>



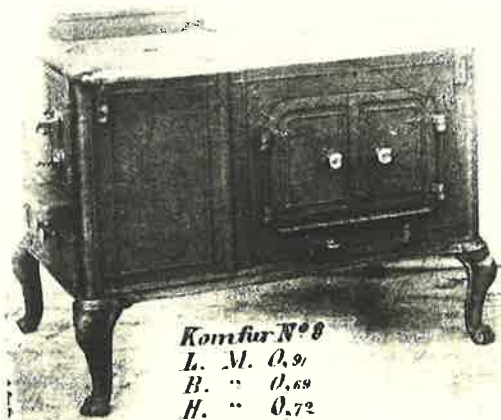


Amerikansk Bryggepande
Kr.

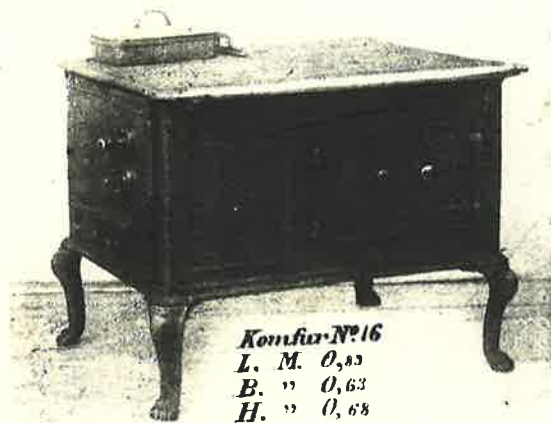
Søsterovnen N^o 2
Kr.



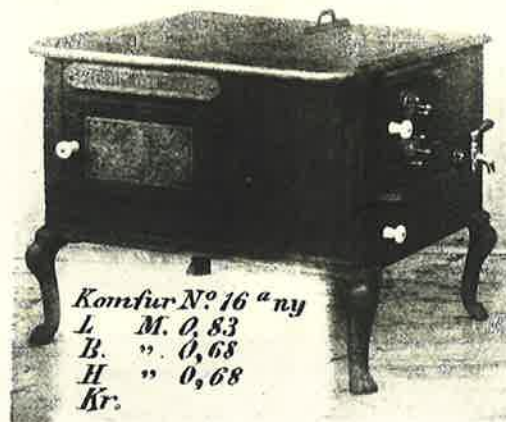
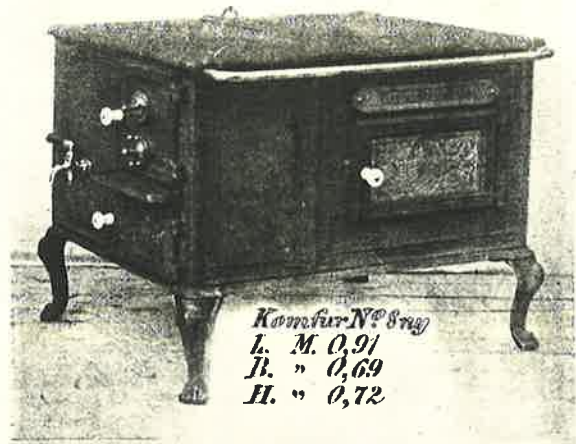
Komfur N^o 14
L. M. 1,33
B. " 0,65
H. " 0,70
Kr.

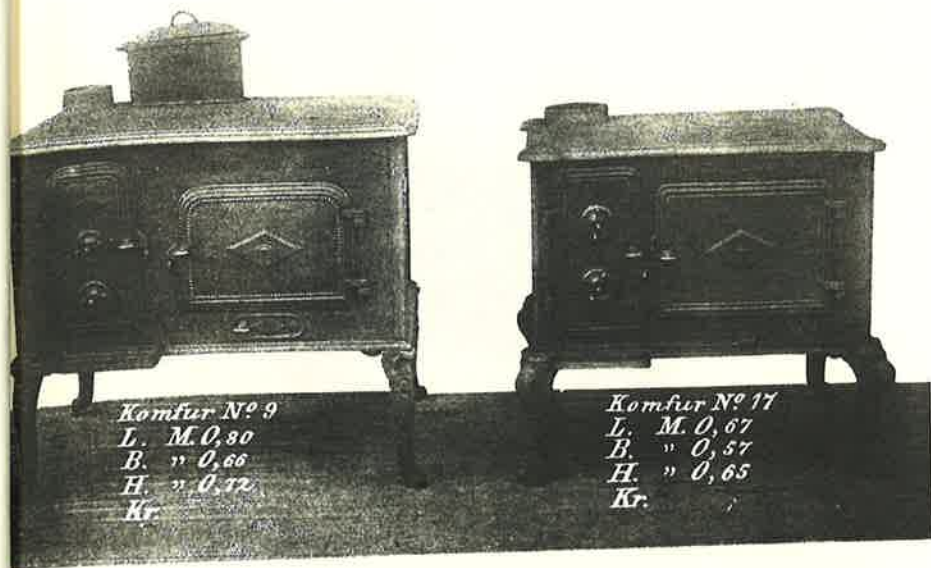


Komfur N° 8
L. M. 0,91
B. " 0,69
H. " 0,72
Kr.



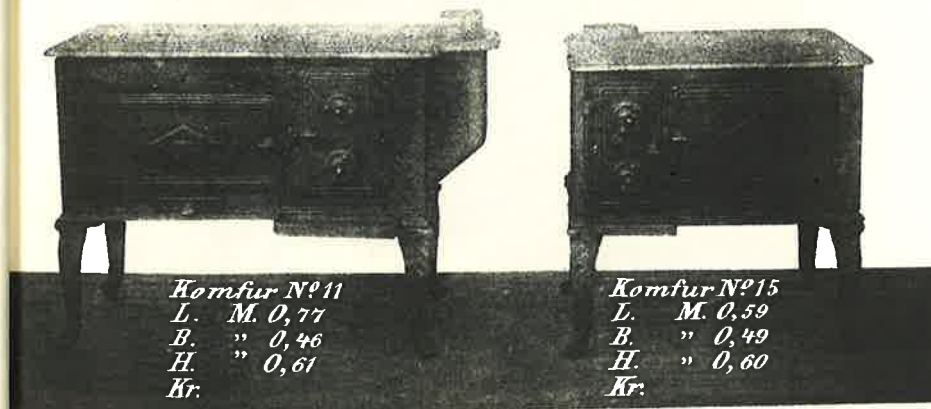
Komfur N° 16
L. M. 0,55
B. " 0,63
H. " 0,68
Kr.





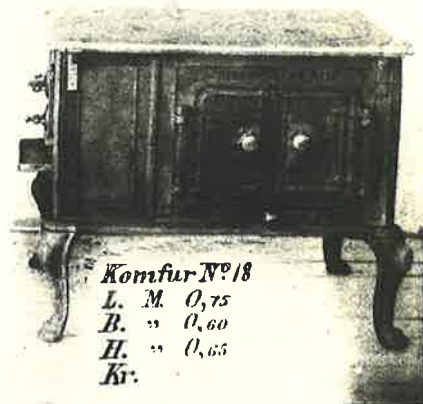
Komfur N^o 9
L. M. 0,80
B. " 0,66
H. " 0,52
Kr.

Komfur N^o 17
L. M. 0,67
B. " 0,57
H. " 0,65
Kr.



Komfur N^o 11
L. M. 0,77
B. " 0,46
H. " 0,61
Kr.

Komfur N^o 15
L. M. 0,59
B. " 0,49
H. " 0,60
Kr.



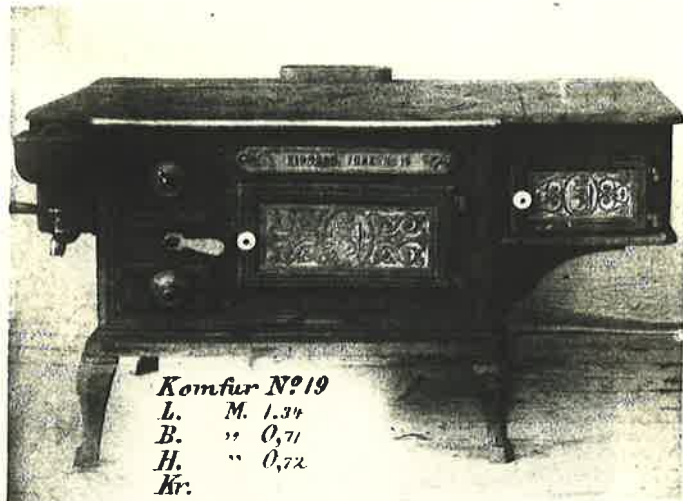
Komfur N° 18

L. M. 0,75

B. " 0,60

H. " 0,65

Kr.



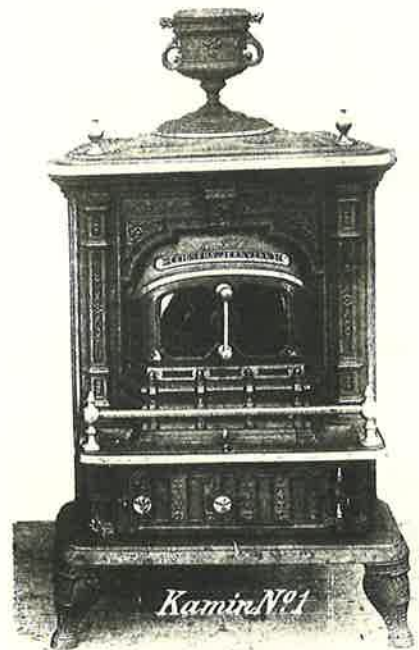
Komfur N° 19

L. M. 1,34

B. " 0,71

H. " 0,72

Kr.



Kamin N°1



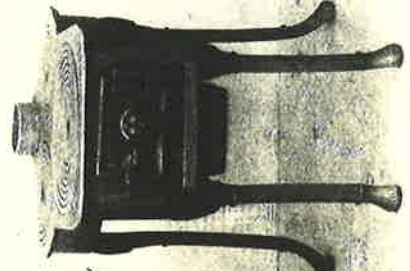
*Kamin N°20
L. 0,90m. B. 0,66m.
H. 0,61m. Kr.*



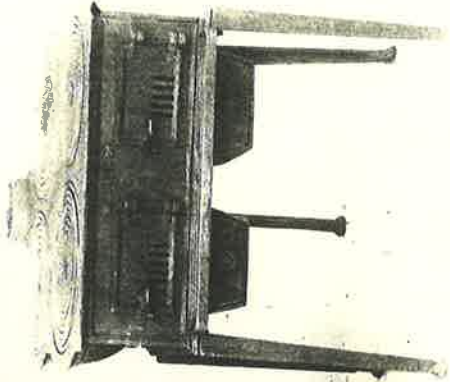
Kogeeon E/4
L. M. 0.90 B.M. 0.45
H. " 0.65 Kr.



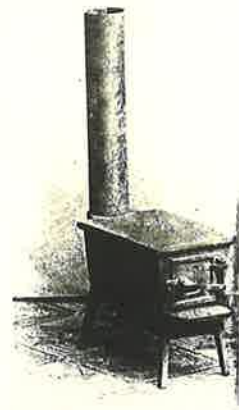
Kogeeon E/5
L. M. 0.79 B.M. 0.36
H. " 0.27 Kr.

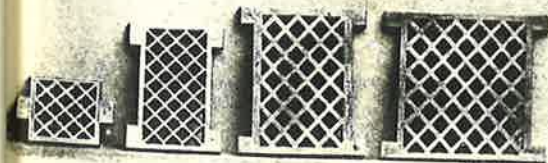
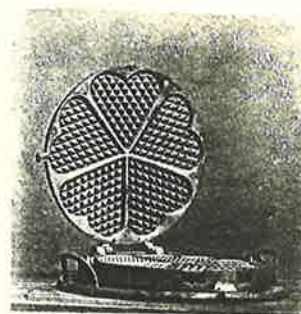
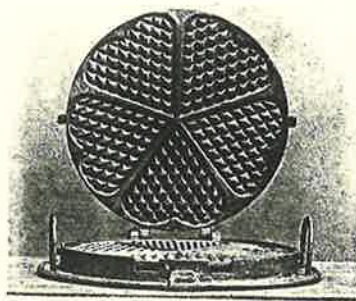


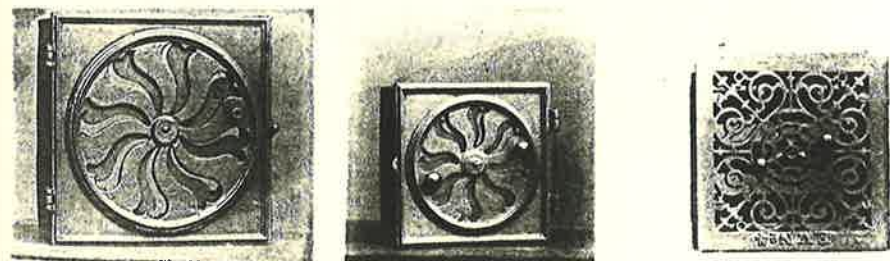
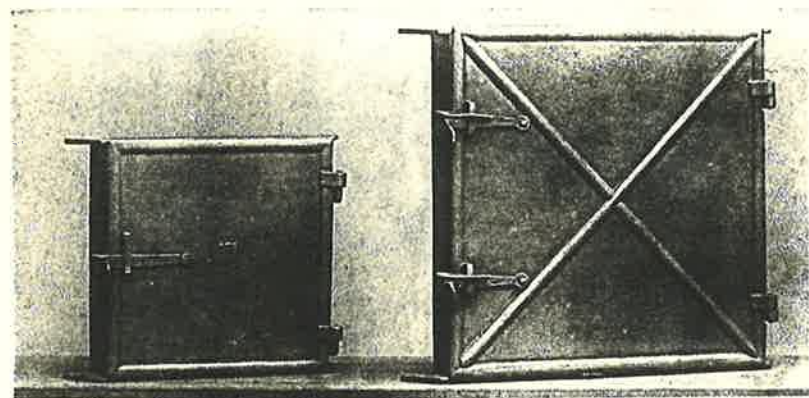
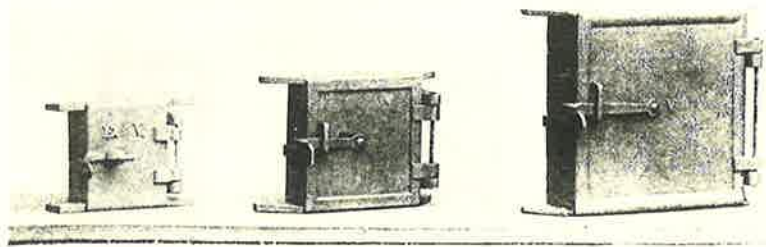
Kogeeon N/7
L. M. 0.70 B. 0.52
H. " 0.61 Kr.

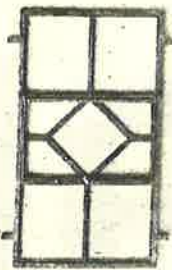
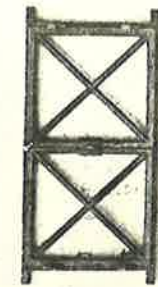
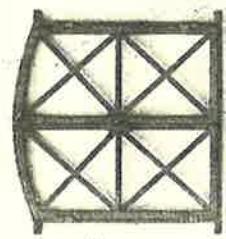
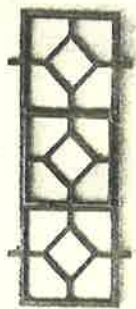


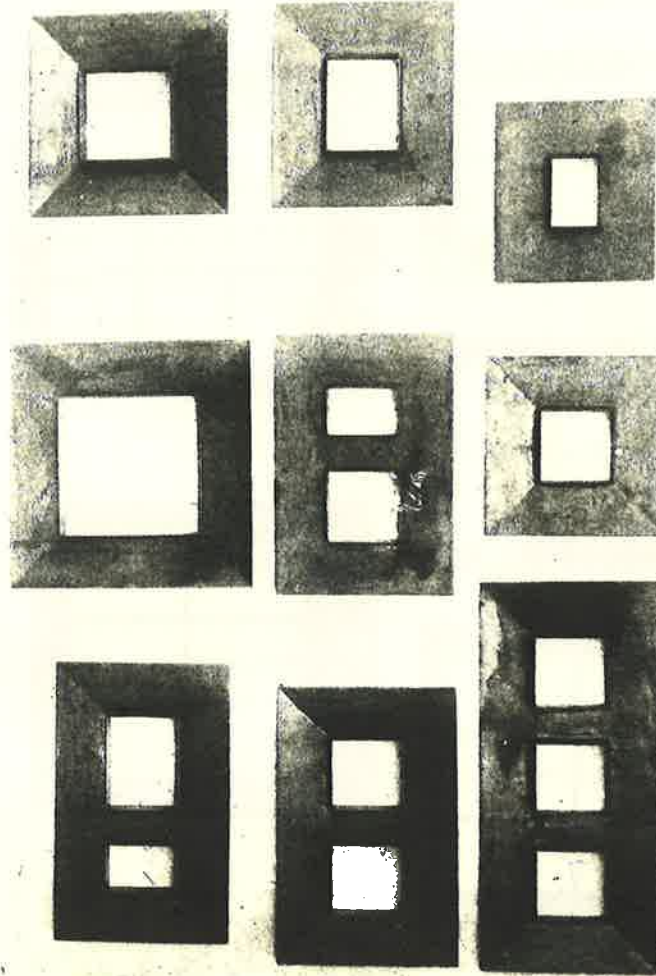
Kogeeon N/8
L. M. 0.67 B. M. 0.68
H. " 0.68 Kr.



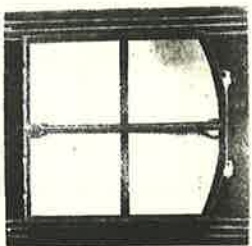
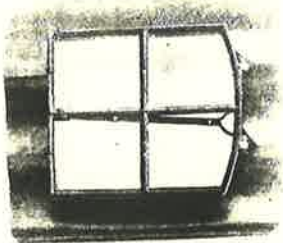
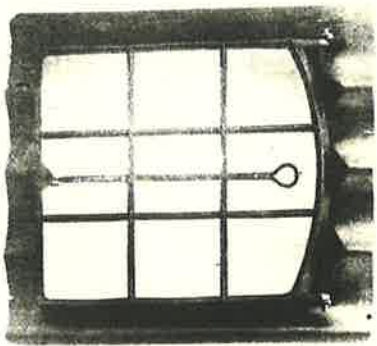




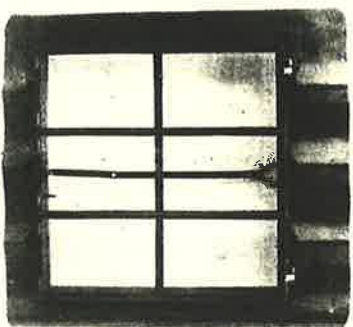


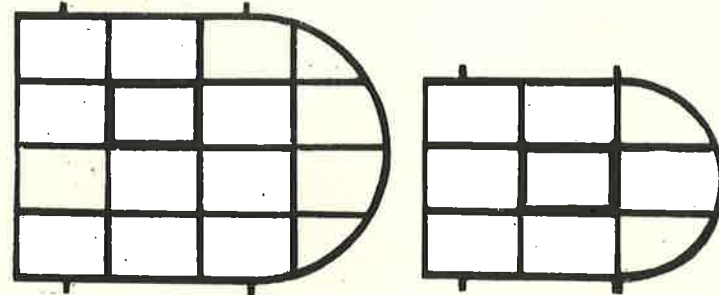
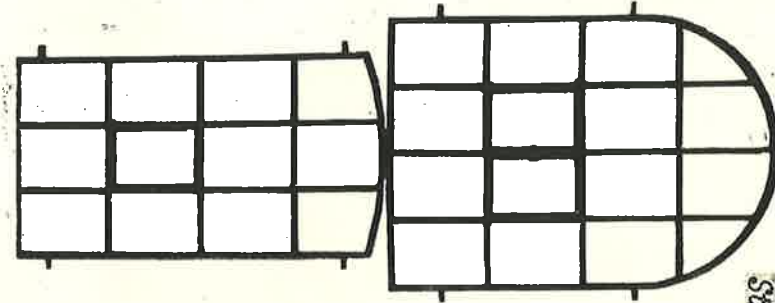
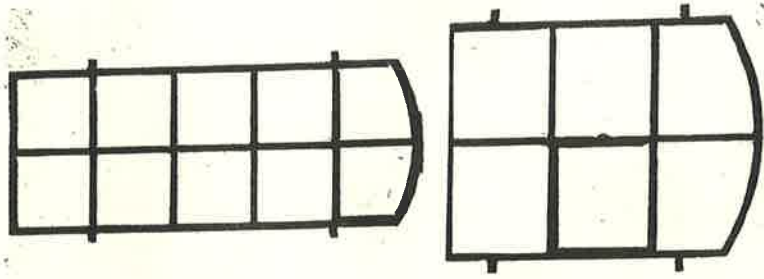


271.100.111

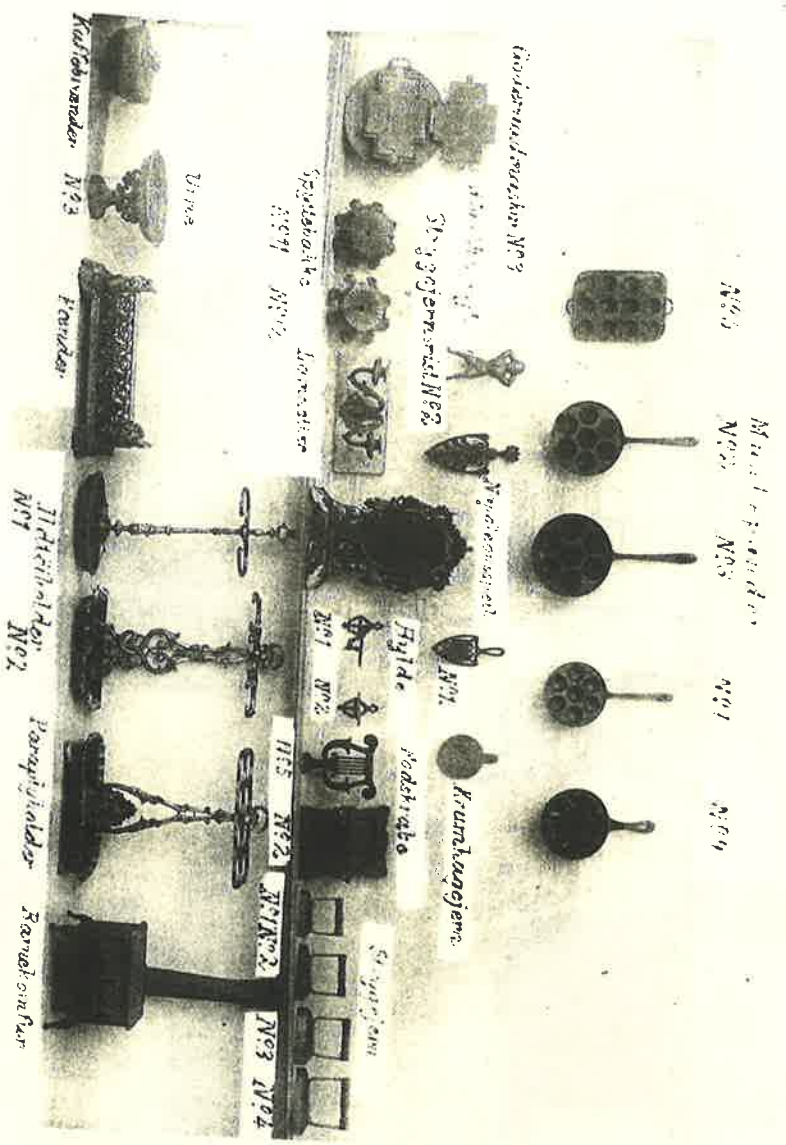


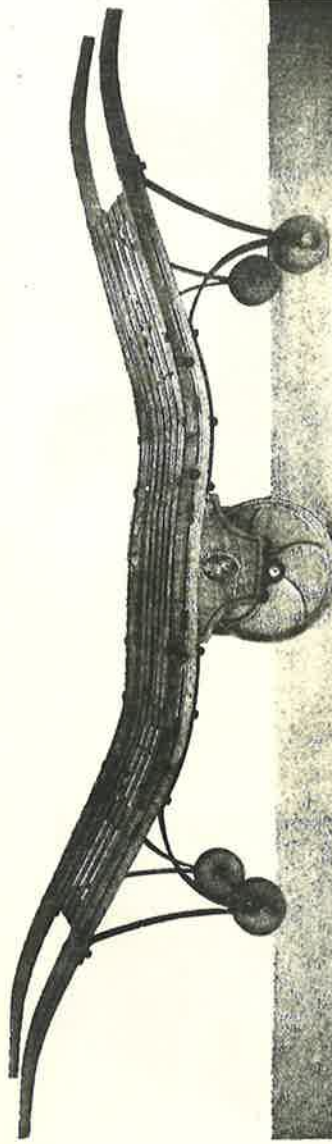
Handwritten text, possibly a date or reference number.





Stalwindler

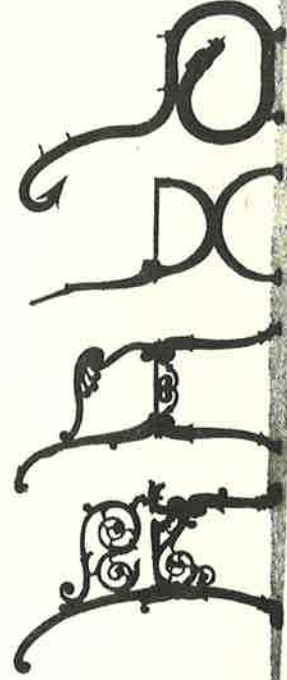




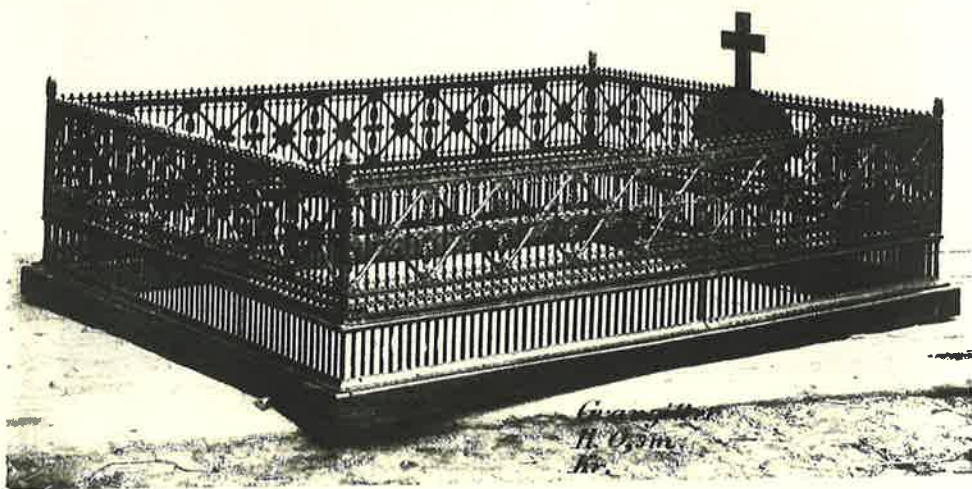
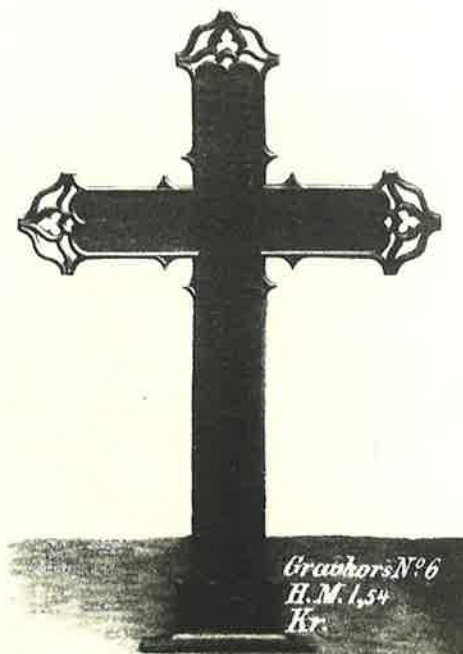
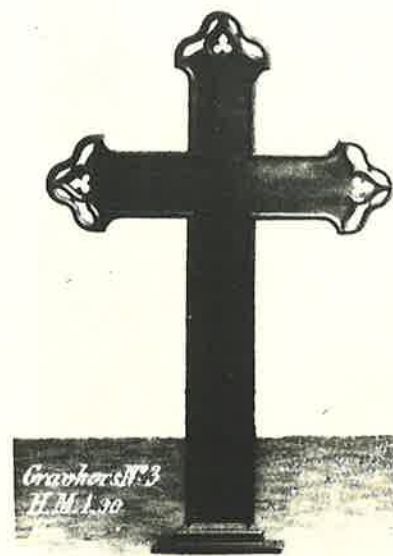
Plattformalle
Kr.

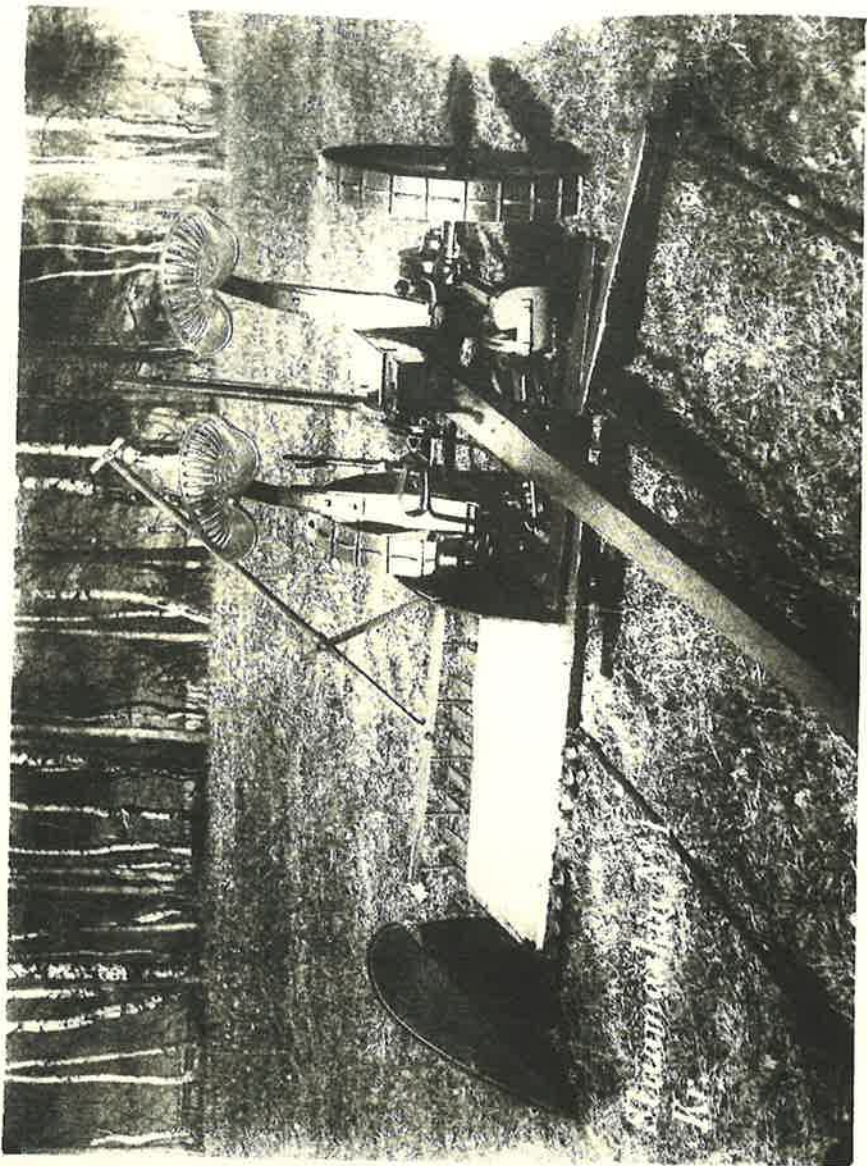


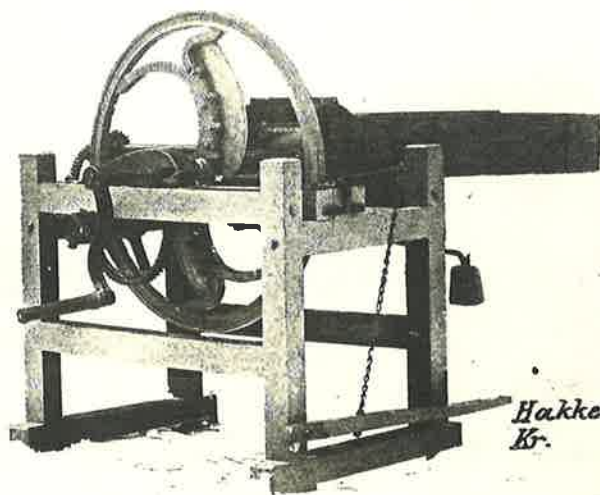
Konifer-Nº 21
H. M. 0,60
B. 0,48
L. 0,74
Kr.



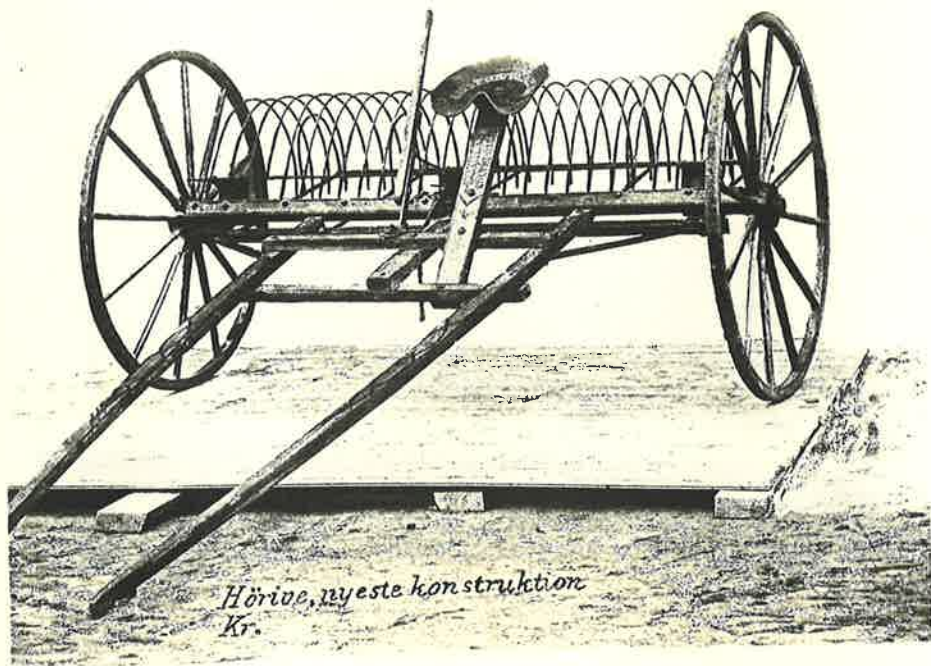
Havbentner
Nº 1 Kr.
Nº 3 Kr.
Nº 4 Kr.
Nº 2 Kr.



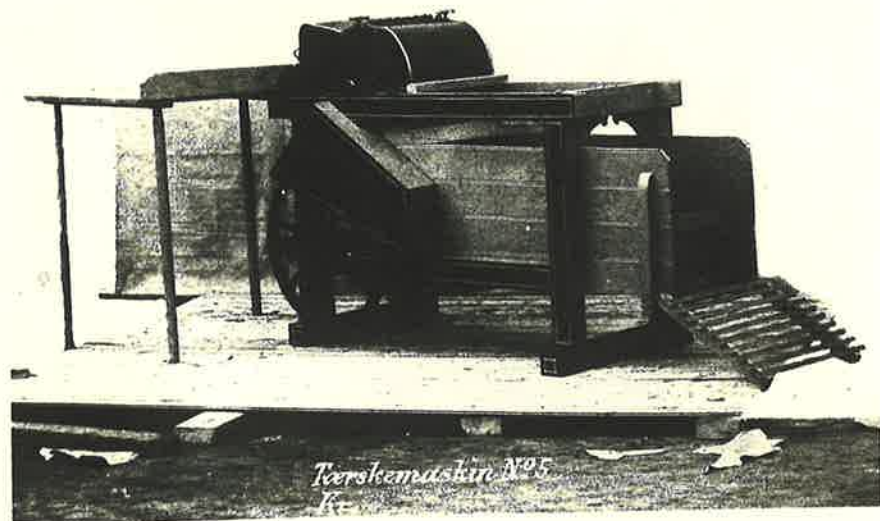
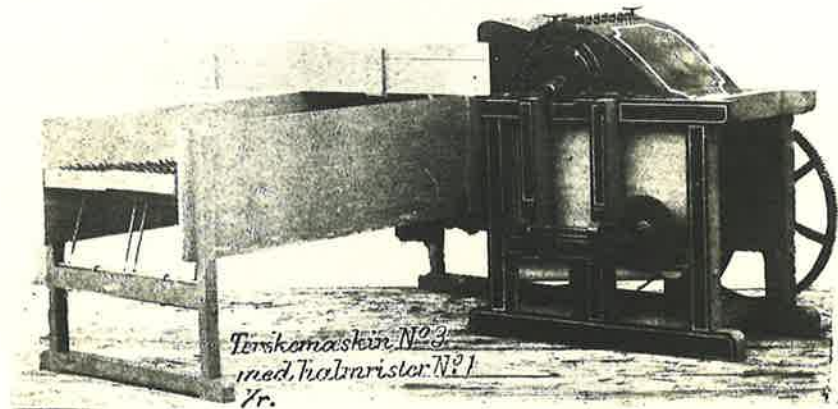


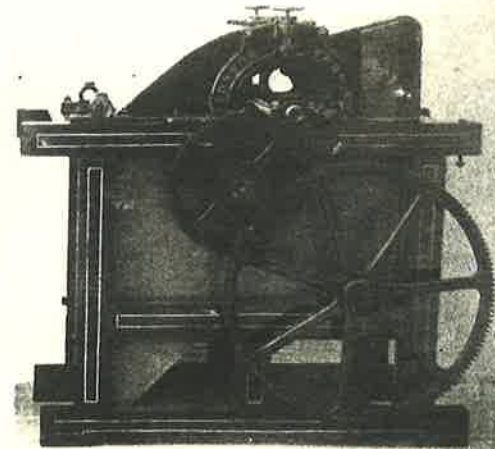


Hakkeesmaskin N^o
Kr.

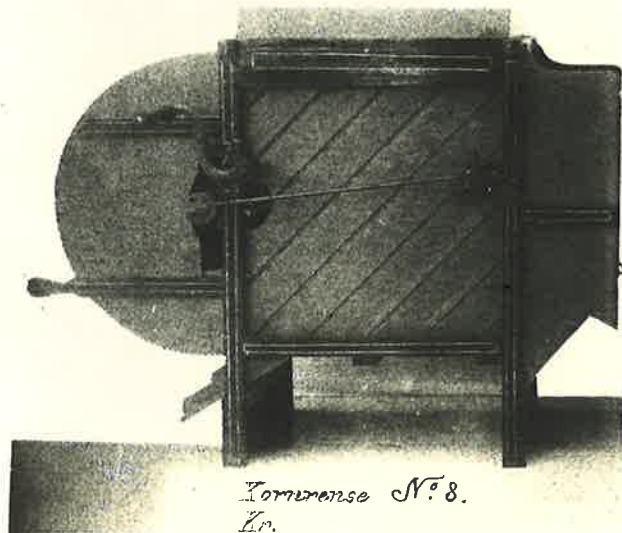


Hörve, nyeste konstruktion
Kr.

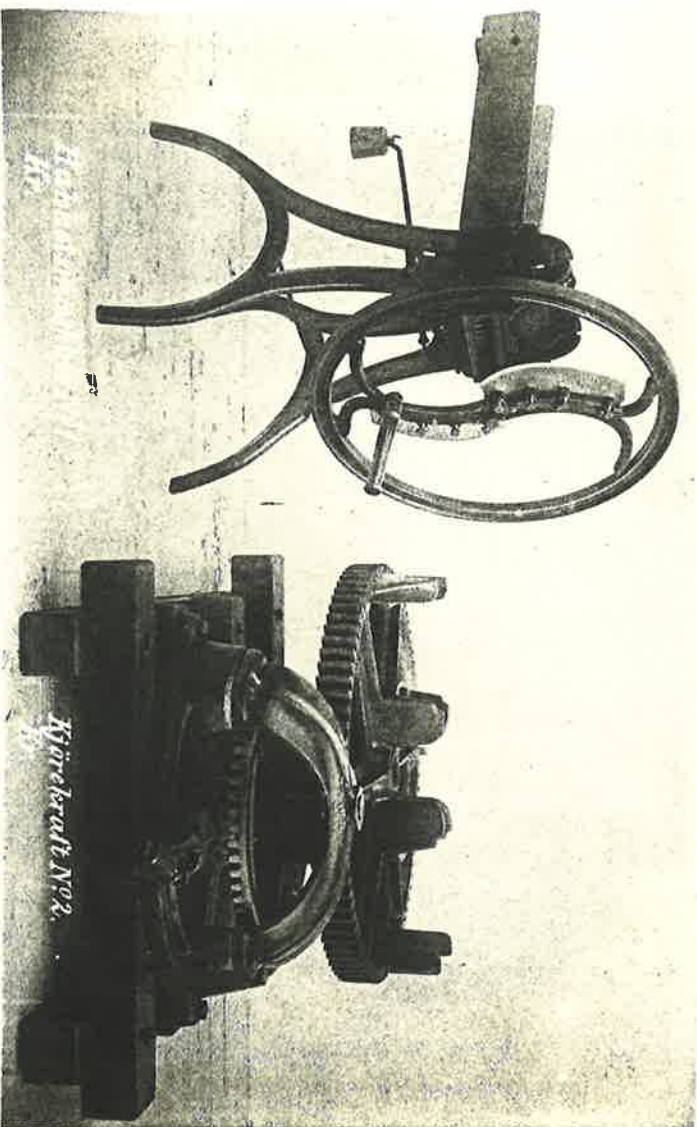




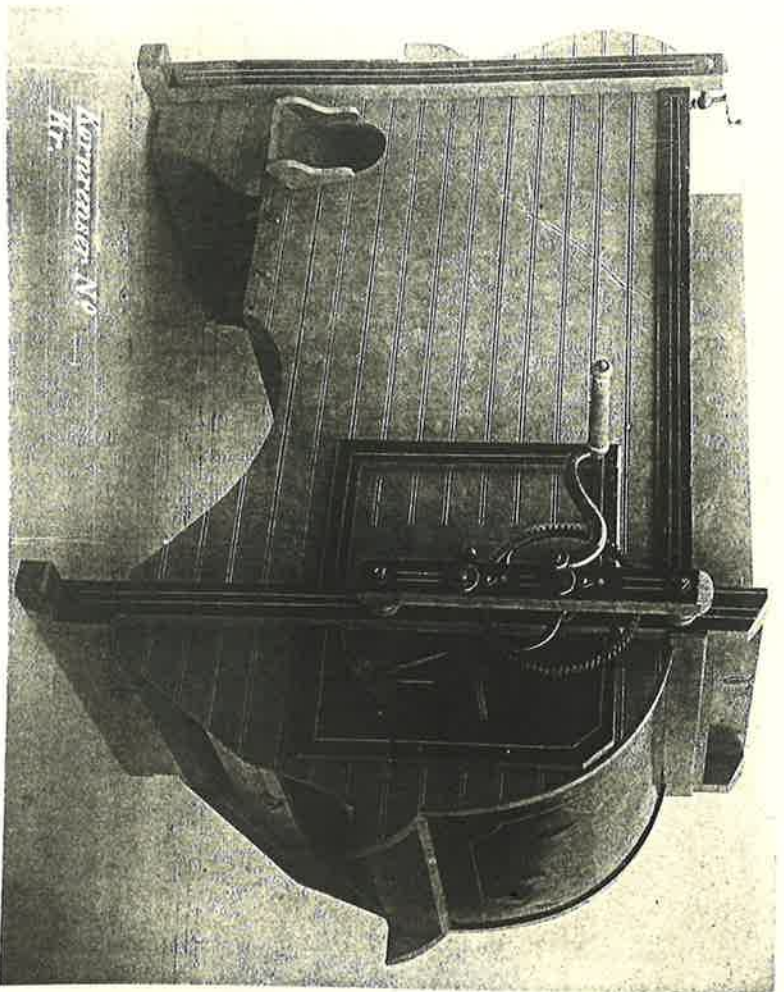
Trastemasstein N° 2
Kn.



Kornmühle N° 8.
Kn.

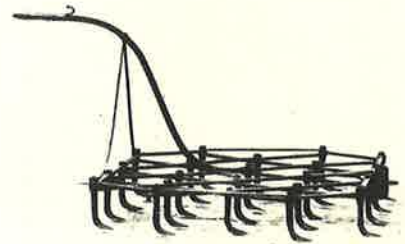


Kjörberudt No. 2.

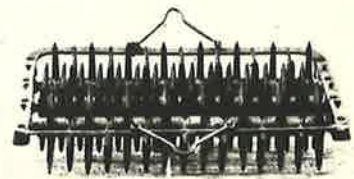




Labbcharv, oval
Kr.



Labbcharv, diagonal
Kr.



Rullecharv
Kr.